



KONGSBERG

*Training
Anytime and
Anywhere*

K-SIM® E-LEARNING

K-SIM CONNECT

K-Sim Connect is our cloud-based ecosystem for maritime education and training, where KONGSBERG provides simulation and services to all members.

On this platform, we currently have in place a range of subscription-based solutions benefitting the users, and we are continuously creating additional services for the community.

Solutions available today:

- eLearning modules for the existing K-Sim simulators
- remote simulator solution for Navigation and DP training
- Library of K-Sim Engine and Cargo- models, and K-Sim Navigation vessel models
- Library of exercise-areas
- Latest simulation news, user stories and research articles
- Invitations to User Conferences

www.ksimconnect.com

ONLINE LEARNING SOLUTION WITH SIMULATOR CONNECTION FOR INSTRUCTORS AND STUDENTS

K-Sim® eLearning solution

Our eLearning solution enables you as instructor to provide exercises and simulator access for your students, who can practice and prepare for their exams - anytime and anywhere.

Several of our high-fidelity simulators are now available as eLearning modules on K-Sim Connect, which is our platform and ecosystem for maritime simulation and training. The K-Sim eLearning solution is easy to use and enables you to upload your own exercises from the instructor system at your school to the K-Sim Connect platform, efficiently manage them and make them available for your students. When the students have completed the exercise, you can download an assessment file with the score to give personal feedback.

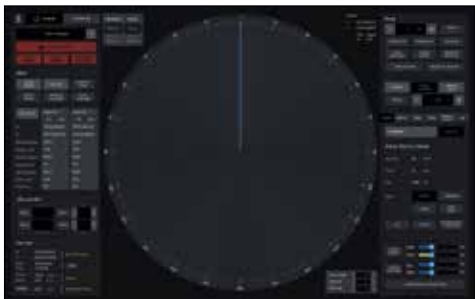
Access to simulators at school can be limited by capacity and school hours, but it is commonly understood that volume training is key to increasing competence levels. Complementing the site simulators at your training center with the eLearning module can greatly improve the student's learning outcomes by allowing them to prepare in advance, and also repeat exercises after simulator classes. If you don't have a simulator at your school, the eLearning modules work equally well as an independent learning platform to support ordinary education.



At the K-Sim Connect portal, you can find a catalog of ship models, exercise areas, engine and cargo models.



The exercise archive allows instructors to define, upload and organize exercises for any K-Sim eLearning model.



The K-Sim Navigation eLearning module includes all the details needed to meet your training objectives. Above you can see the new Radar display.



The eLearning module is recommended for volume training and can either be used in a classroom situation, or at home. Embraced by instructors and students worldwide, the solution allows training anytime and anywhere.



OUR E-LEARNING MODULES FOR K-SIM ENGINE AND K-SIM CARGO:

Our existing K-Sim Engine and K-Sim Cargo models are all compatible with eLearning and can be delivered online within a short time. The following models are available instantly:

- K-Sim Engine MC90-V (VLCC) model
- K-Sim Engine MAN 6S70ME-C SCC model
- K-Sim Engine DEDF - CF I (Cruise Ferry) model
- K-Sim Engine DEDF - CF II (Cruise Ferry) model
- K-Sim Engine M11 CNTR model
- K-Sim Engine Steam Propulsion Dual Fuel SP11 model
- K-Sim Engine GE LM2500 30 (Gas Turbine) model
-
- K-Sim Cargo SCC-II model
- K-Sim Cargo PrC (Product Carrier) model
-
- K-Sim TPP (Thermal Power Plant) model

The eLearning modules are delivered with initial condition exercises. As an instructor, you can also upload and apply your own exercises, supporting the specific model and software version. In order to run your own exercises, you will need to use a K-Sim Instructor System in addition to the eLearning module.

OUR E-LEARNING MODULES FOR K-SIM NAVIGATION

For education in navigation and shiphandling, we have started rolling out K-Sim Navigation eLearning modules, whereas the first available module is targeting RADAR and ARPA training. New training modules compliant with the requirements in the STCW convention will be continuously rolled out.

SUBSCRIPTION-BASED SERVICE

The eLearning module is a service and a subscription is required to get access. The volume of the service can be scaled based on how many students who require access.

REQUIREMENTS

- An internet connection is required during the simulation.
- The K-Sim Connect web portal can be accessed using any web browser on any platform, but is optimized for Google Chrome
- Windows 10 operating system is required to run the student client software for the K-Sim Engine and K-Sim Cargo eLearning modules.

START USING THE E-LEARNING MODULE

If you already are a K-Sim user, you only need to contact us to purchase and sign up for the required licenses and get access to K-Sim Connect and the eLearning modules at www.ksimconnect.com. The system is intuitive and easy to use, and our support team is ready to help you to get started.

